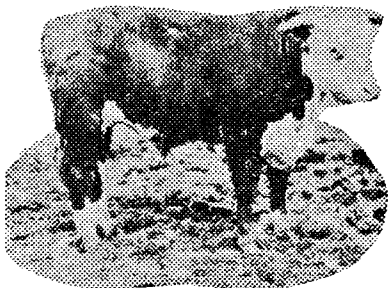
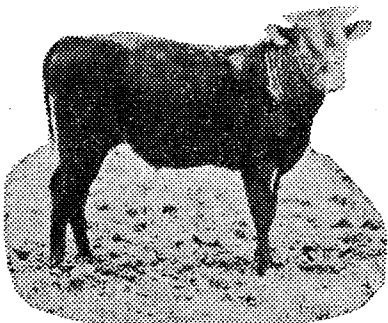


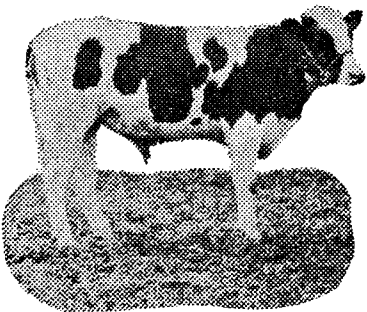
Get Your Tickets Now!



Hereford Bull



Short Horn Bull



Holstein Bull

**If You Are
An
Ionia County
Farmer**

Every Member of
Your Family
Is Entitled To
One

Free Ticket

On These
**Three
Pure Bred
Bulls**

Tickets can be secured at the Bank at any time. Stock will be given away during the Free Fair. This is the Bank that helps the Farmer.

The National Bank of Ionia

NO STRINGS ATTACHED TO THIS OFFER.

RURAL ROUTES OF IONIA DISTRICT

FROM IONIA

Route No. 1—North two miles on Steele road past Minty's farm to Holcomb Corners. East one mile, north one-half mile to LaDow corners, east two and one-half miles to Powell's corners, north two miles to Cooper farm, east and north four and one-half miles to Hubbel's corner, west one mile to Snow's corner, west and south four miles to Morse and return to Ionia.

Route No. 2—South six miles over the Kelsey hill road, two and one-half miles east and north of the Steele school house on the old No. 16 road to the M 21 road, west on M-21 to Cleveland street and return to Ionia.

Route No. 3—Out south on Bellevue road seven miles, east and west one and one-half miles and return to the Bates road, then to River road to South Ionia and to Ionia P. O.

Route No. 4—West and north to Linn corners, north on M-43 to Clute's corners, west to Leo Worden's, north on M-43 to Nelson's, East to Steele road, to Hubbel school site east to Young's corners, to Brick school, west and south on Robertson road to M-43, north to Stoddard's, to L. E. Hall's orchards, west to Bluemly road to Eaton tp. road to Grove school, on M-44 to Haynor's, west to Dildine corners, to Welch school, east and return to P. O.

Route No. 5—West and north three miles on Yoemans street to Winslow residence, and south and west four miles to Bellemly corners north and west five miles, east and south and southeast two miles to Rowley's corners, east and southeast on the Yoeman's road to Lincoln Ave. to P. O.

Route No. 6—West on M-21 five miles to first cross road past the county farm, south to one mile south of M-16, east one mile to Durkee's filling station, north and west on Bellevue road, thence to P. O.

Route No. 7—East on Main street to Prairie Creek, northeast to Spaulding's corners, thence two miles east on the Muir road to Lyons township line, north and east to Madisen's corner, east and north to North Plains line, west and south to Nickle Plate, south and west to Jackson creek road to P. O.

FROM SARANAC

1—East to school house, thence east and south five miles to good road, thence west one mile, south to Morrison Lake, thence north four and one-half miles to Saranac, thence west and south two miles, thence east one mile, south one mile to Waterville school house, thence west one mile, south one mile to M-16, west one-half north one mile to Boston Center School, thence west to Nathan Gould farm

and retrace, thence North and west to M-21, east to Saranac.

2—North one-half mile, east and north three miles to Dexter school house, west two miles, north to Potter corner, thence east and north to Easton Cemetery, thence east two miles south to Potters corners, west one mile, thence north and west to M-66 south and west to Chad Lee farm, east to first four corners, south one mile, east one mile, south to Saranac

3—North to top of Dugway' Hill, west two and one-half miles, north to M-66, retrace south to Pickney Cemetery, east one and one-half miles, south one mile, retrace north one-half mile, west to end of road, south to end of road, east to Highwater road, south to Saranac.

4—East on M-21 three and one-half miles, south o Hartwell school house west two miles, south to Mud street, east two mile, south one mile, east to Berlin Center, south to M-16, east one mile, south to good road, west to church and school house, north to M-16, west one-half mile east on M-16 one and one-half miles, north one mile, west to Page's corner, north to end of road, west to end of road, north to Saranac.

FROM PORTLAND

1—North around Maynard road to Hoppas place, east to Hamlin school, south to town through town across Portland, Danby Bridge to Emerys corners, doubles south and east both one-half mile, then north on townline road to Knox school, west one mile south one one-half miles, west to Sunfield road; north one half mile, east to Currays corner, north, east and round river, road to town.

2—Northwest past dam to Campbells corner, west three miles, south to M-16, west to M-43, south one mile, east one mile, north on M-16 to Ferguson's corner, east to Wadsworth orchard, north to Gibbs, east to Proharts, south to Probart school, east into town.

3—River road to South Danby section Shimnecon, west on Kelly road to Ad Rice place and back past Danby Grange hall to Grafts corner, south to Fryer corner, east to county line, south and west following river back to Mulliken road retrace across centerline, and back on Mulliken road to town.

4—Across Lookingglass, thence east to county line, north to Smiths, east to Len Smith farm, south to end of road, east to Howell school, south to end of road east to county line, south to end of road, west to M-16 south to Frost corner, east to county line, south to Bouchs corner, west to end of road, north into town.

R. L. WESTBROOK Auctioneer

NINETY-EIGHT SUCCESSFUL SALES IN THIS DISTRICT

Call or Write for Dates

IONIA R. F. D. 7

MUIR UNION PHONE 3, 2 long 1 short
IONIA, MICHIGAN

5—West on M-16 to Carbaughs corner, south on Sunfield road two miles, west one mile, south one-half mile, east one-half mile, south one mile, west one-half, north one mile, west two miles, north one mile to west Sebewa, retrace one and one-half miles east, then west to M-43, north one-half mile, east to Sunfield, north to angling road east to town.

FROM CLARKSVILLE

1—North, west and north to Bever's corners, west to Grange Hall, south and west to Chas. Klahn's, east and south to F. Yoder's, east and north to Post Office.

2—North and east to Roy Eldred's corner, south to Nash's corners, east and north to W. M. church, Berlin, west and south to Clinton Trail, south and east to Longley corner's west and north to Post Office.

3—South four mile, west and south to Bustance's corners, north and west to Logan, east and south to Hewitts' corner, north and east to Post Office.

FROM PEWAMO

1—East one and one-half miles, west one mile, turn at school and go three and one-half miles, west to Blackmer farm corners, east one mile to Little Brick school house corner, south one mile to Raymond Townsends' corners, one and one-half miles west to Howard Wright's corners, one mile south to Charlie Townsend's corners, two miles east to Frank Cook's corners, two miles south Mike Bedenbender's corners, one mile west to John Bedenbender's corners, one mile south to Louie Trieweiler's corner, one mile east to Anthony Plines' corners, one mile south to Will Pungs' corners, one mile west to John Pungs' corners, one mile north back to Louie Trieweiler's corners, one mile west to the Portland road, one mile north to Martin Plines' corners, one and one-half miles east back to John Bedenbender's corners, then turn corner and go by Mark Probarb's farm to Lena Kramers farm residence, then turn around and retrace back to the first corner which has been passed, and go one-half mile east, then turn north and go north two miles to Pewamo, P. O.

FROM MUIR

1—North and west to town line, north two miles, east one-half mile, north one mile, east one-half mile, north two miles, west one mile, north one mile, east one mile, north one-half mile and retrace south one mile, east one mile, north one mile, west three-quarter mile and retrace to corner, then one mile east, one mile south, three-quarter mile east and retrace to corner, west one mile, south one mile to Bassett's corners, then west one mile, south one mile to Hayeses, then east three-quarter mile and retrace to Hayeses, then one mile south to town line, then east one mile and back to Hays road, then south one mile, west one-half mile, south one mile to P. O.

2—East to end of main st., north to Cemetery, east to end of street, north one block, east and north to Struble's corners, then north to J. E. Ross' corners, then east to end of road, then north to end of road, then east to end of road, then north to H. Harder's corner, then east to Schultze's corners and return to H. Harders' corners, then north one mile, east one mile north one-half mile, then east around lime Kilm hill, then north to Lois Tyler's corners then west to Elmer's Hights, then north to M. Hogan's corners and retrace to corner, then west to Thos Hogan, and retrace to corners, then south to school house, then south to Geo. E.

Dick's and retrace to school house, then west one and one-half miles to Bassett's corners, south one-half mile, west to C. J. Wilders and retrace to corner, then south to M. C. Strachans' corners, then east one and one-half miles, south one mile west one one-half miles to Fletcher's corners, then south one mile, west 1 mile to Hays road, then south to main st. and west to P. O.

FROM HUBBARDSTON

1—South to Patrick's corners, east to Kemp's corners, north to Tyler's corner, east to Burch's corners; north to Burns' corners, west to Connell's corners, south to Tyler's east to Office. North to Leslie Clarks' corners, west to Jerry Grace's corners, south to Kane's corners, East to Burns' corner, south to Roache's corners, east to Office.

FROM ORLEANS

1—North one-half mile, east one mile, south one mile and three quarters west one-half mile to John Meades corners, south three miles on M-44 to John Van Giesen, north and east to Chas Peterson corners, north three miles, east one mile, south one-half mile, north on state road two and one-half, west one mile, south two miles to pipers school house, west one mile, north to long lake west to Ravell corners, south to Dorr school house, east to Chittle school house, south to Post office.

FROM LAKE ODESSA

1—West five and one-half miles on M-39 to turn, south one mile to county line road, east one-half mile, north two and one-half miles to Pinhook, east three-quarter miles and retrace to Brethern church corners, south one one-half miles to M-39, east one-half mile, north one and one-half miles, east one mile to town line, south three-eighth mile and retrace seven-eighth mile, north, east one-half mile, north to old Clinton Trail, west one-half mile to town line road, north one-half mile to Shank's corners, east to Algodon school, north three-quarter mile and retrace, south three-quarter mile and retrace, east one mile, south three miles, east one mile and return to Lake Odessa.

2—North on main street to old Fair grounds, west, three quarter mile, north one-half mile, west one mile to west Odessa church, north two miles to old Clinton trail, west and retrace three-eighth mile, east two miles to Odessa Center road, north one and one-half miles to Limerick school house, west one mile, north two miles to gravel road, east one mile, south one mile to town line corners, one-quarter mile east and retrace, south one mile to Limerick school, east one mile, south one mile, south three-quarter and retrace, west one-half and retrace, east two miles to Henderson's corners on M-43, south one mile, west one mile to Byple school, south one mile to August's corner on gravel road and return to Lake Odessa.

3—South on main street to end of pavement, west to end of road, south to end of road, west one-half mile on gravel. Leave gravel going south and west one mile to gravel again, thence north two and one-half miles to west Owessa church, west one mile to end of road, south two miles to county line road, west two miles to Old Dunkard church, south one mile to gravel road, west to Brown school corner east eight miles to Eckardt's corners, north one mile to Garlingers corners, west to Fox farm, north and west to Lake Odessa.

4—North on Jordan Lake Ave. and gravel road to Odessa Center, east two miles to Byple school, north two miles to Carr school, one mile west to Shilton's corners, north two miles to Badgley's corners, east on gravel one mile, south two miles to Carr school, one mile east to M-43, south one mile on M-43 to Henderson's corners, east one mile, south one mile to Johnson school, east one and one-half miles, retrace one-half mile, one mile south to Ed Demaray's corners, west on gravel to Sebewa Baptist church, north one mile to Johnson school, one mile west to M-43, one mile south on M-43 to gravel, then west to Marcus Chapman's corners, south one-half mile, west to Lake Odessa.

5—East one one-half miles on M-39 to Huddle's corners, east, north and east two one quarter miles to M-43, south on M-43 two miles to M-39, west on M-39 one mile to Eckardt's corners, south one mile, east one mile, north one mile to M-39, east on M-39 one mile to Need school, north three miles to Baptist church, east three miles to Browns corners, on gravel south one mile, west four miles to M-43, north one mile on M-43 to gravel, west one mile on gravel, south one-half mile, west three one-quarter miles to Lake Odessa.

FROM SHERIDAN

2—West to Anderson's corners, south to W. D. Peterson place and return, west to Jenson's corners, north one-half mile, west to Johnson's corners one-quarter mile, north to Anderson's corners, west to J. Hanson's corners, south to end of road, east to Hemington's corners, north to Sorenson's corners, west one-half mile and south to end of road one-half mile, west one-quarter mile, and south to Barnes' corners three-quarter mile east to M. S. Wood's corners, south to railroad, west to Miller station, south to Geo. Hansen place one mile and north to crow's corners, east and south to Palmer, east to Olsen, north one mile, west one-half and retrace one mile, north to Greggs, east and north to Barlow, east and south to Post Office.

3—North and east to Stanton corner, north and east to school house corner, north, northwest and north to Martin corner, east to Straker's corner south to school house corner east to church corner one-half mile, south to Dunn corner one-half mile, east to Lawson's corner one-half mile, north to Bohn's corner one-half mile, east to Bowen corner, north to Steers' corner west to Briggs' corner, southerly to Braman's corner, west to Phillips' corner, north to school house corner, west to Prestal's corner, south three-quarter mile, east three-quarter mile, retrace three-quarter mile, south three-quarter mile to corner, east one-half mile section 33, west to Post Office.

FROM CARSON CITY

1—North one-half mile to village limits; north and northerly one and one-quarter miles to Jolly corner, west one-quarter mile to corner north two and one-quarter miles to Crystal box and retrace one and one-quarter miles to church corner, east four miles, north one mile, south one-half mile to Bigelow's corner, west one mile to Morse's corner, south one mile to Covell's corner, west one mile to Hodge corner, north one-half mile to Sanders' corner, west two miles to Mayes' corner, north two and one-half miles, west one-half mile, south three and one-half miles to Beck's corner, east one-half mile to end

of road, south two miles, return one and one-half miles to Post Office.

2—West three-quarter mile, south one mile, west three-quarter mile to McIntyre's corners, south two miles to Egan's corners, west three-quarter mile and retrace, south one-half mile to Needham's corner, east one and three-quarter mile, north one-half mile, west one-quarter mile, north one mile to school house corner, east one and one-half miles to Foley's corners, south one mile to school house, west one mile, south one mile to Ludwick's corner, east one mile, north one mile to school house, east one mile, south one mile, east two miles to Eldred's corners, south one mile to Mooney's corners, west two miles, north to Chaffe's corners, one-half mile, west one mile to Foley's corners, north one mile to McCuaig's corners, west one and one-half miles to Palmer corners, north one mile to Carson City.

3—East one and one-half miles, north one mile, west one mile, north one mile, east one mile to Hartman's corners, north one-half mile, east one mile to Jackson's corner, south one and one-half miles to school house, north one-half mile to Thornton's corners, east two miles to John Bellinger's corner, south one-half mile, west one mile, south two miles, east one-half mile, south two and one-half miles, west one mile, north one and one-half miles and west one mile to Carson City.

FROM LYONS

1—One-half mile west, two one-half miles south, turn to right for one-half mile, left one-quarter mile, turn to right for one mile, turn to left for one-quarter mile, turn to right for one and one-half miles, turn to left for one-eighth mile, turn to left for two miles, turn around at L. A. Carpenter's corners back over bridge and hill, turn to right, go to Collins, turn left for one mile, left one mile, turn right for two miles, right one mile, right two miles, turn to left one mile, left one and three-quarter miles right one mile, left one mile follow curve in road and go straight, north on gravel road go down around curve direct to river road or M-21, east and direct into Lyons.

2—South and east four miles, west one-half mile, south two miles, east one and one-half mile across Grand river, one mile south one mile west, retrace one mile, three-quarter mile south, retrace two and three-quarter miles to Maple's corners, one-half mile west, retrace to Maple's corners, one-half mile to Wm Doyan, two mile north west one-half mile west, retrace two and one-half east, retrace one mile west, one-half mile north, one mile east to Grand Trunk R. R., retrace one mile, two miles west, one-half mile south, eighty rods west to Post Office.

FROM SHILOH

1—East to Dye school house, south one-half mile, east to John Wheaton's corners and retrace to Jones' corners north to Wilson's corner, east to C. VanVleck's corners and retrace to Carpenter's corners, south to John Riess, east to Wilson's corner, south to Dan Heath's residence, retrace to Wilson's corners, east one-half mile south, one-quarter mile to Bigmill apple drier, east to McGinnis' corners north and west to Matt Schmidts' corner, east to Baker school house, north one-half mile, west to Palo, north one-half mile, west to Dodson's corners, south to Carpenters corners, west to Miniers' corners, south and west to Snow's corner, west to Conkey's corners, north and west to Shiloh.

PARCEL POST RATES

Charges when shipping by parcel post according to weight of package and distance by zones.	Local In the City	Zone 1-2 Not-over 150 Miles	Zone 3 151 to 300 Miles	Zone 4 301 to 600 Miles	Zone 5 601 to 1000 Miles	Zone 6 1001 to 1400 Miles
Weight of Package	Charges	Charges	Charges	Charges	Charges	Charges
Over 4 oz. up to 1 lb.	5c	5c	\$0.06	\$0.07	\$0.08	\$0.09
Over 1 lb. up to 2 lbs.	6c	6c	.08	.11	.14	.17
Over 2 lbs. up to 3 lbs.	6c	7c	.10	.15	.20	.25
Over 3 lbs. up to 4 lbs.	7c	8c	.12	.19	.26	.33
Over 4 lbs. up to 5 lbs.	7c	9c	.14	.23	.32	.41
Over 5 lbs. up to 6 lbs.	8c	19c	.16	.27	.38	.49
Over 6 lbs. up to 7 lbs.	8c	11c	.18	.31	.44	.57
Over 7 lbs. up to 8 lbs.	9c	12c	.20	.35	.50	.65
Over 8 lbs. up to 9 lbs.	9c	13c	.22	.39	.56	.73
Over 9 lbs. up to 10 lbs.	10c	14c	.24	.43	.62	.81
Over 10 lbs. up to 11 lbs.	10c	15c	.26	.47	.68	.89
Over 11 lbs. up to 12 lbs.	11c	16c	.28	.51	.74	.97
Over 12 lbs. up to 13 lbs.	11c	17c	.30	.55	.80	1.05
Over 13 lbs. up to 14 lbs.	12c	18c	.32	.59	.86	1.13
Over 14 lbs. up to 15 lbs.	12c	19c	.34	.63	.92	1.21
Over 15 lbs. up to 16 lbs.	13c	20c	.36	.67	.98	1.29
Over 16 lbs. up to 17 lbs.	13c	21c	.38	.71	1.04	1.37
Over 17 lbs. up to 18 lbs.	14c	22c	.40	.75	1.10	1.45
Over 18 lbs. up to 19 lbs.	14c	23c	.42	.79	1.16	1.53
Over 19 lbs. up to 20 lbs.	15c	24c	.44	.83	1.22	1.61
Over 20 lbs. up to 21 lbs.	15c	25c	.46	.87	1.28	1.69
Over 21 lbs. up to 22 lbs.	16c	26c	.48	.91	1.34	1.77
Over 22 lbs. up to 23 lbs.	16c	27c	.50	.95	1.40	1.85
Over 23 lbs. up to 24 lbs.	17c	28c	.52	.99	1.46	1.93
Over 24 lbs. up to 25 lbs.	17c	29c	.54	1.03	1.52	2.01
Over 25 lbs. up to 26 lbs.	18c	30c	.56	1.07	1.58	2.09
Over 26 lbs. up to 27 lbs.	18c	31c	.58	1.11	1.64	2.17
Over 27 lbs. up to 28 lbs.	19c	32c	.60	1.15	1.70	2.25
Over 28 lbs. up to 29 lbs.	19c	33c	.62	1.19	1.76	2.33
Over 29 lbs. up to 30 lbs.	20c	34c	.64	1.23	1.82	2.41
Over 30 lbs. up to 31 lbs.	20c	35c	.66	1.27	1.88	2.49
Over 31 lbs. up to 32 lbs.	21c	36c	.68	1.31	1.94	2.57
Over 32 lbs. up to 33 lbs.	21c	37c	.70	1.35	2.00	2.65
Over 33 lbs. up to 34 lbs.	22c	38c	.72	1.39	2.06	2.73
Over 34 lbs. up to 35 lbs.	22c	39c	.74	1.43	2.12	2.81
Over 35 lbs. up to 36 lbs.	23c	40c	.76	1.47	2.18	2.89
Over 36 lbs. up to 37 lbs.	23c	41c	.78	1.51	2.24	2.97
Over 37 lbs. up to 38 lbs.	24c	42c	.80	1.55	2.30	3.05
Over 38 lbs. up to 39 lbs.	24c	43c	.82	1.59	2.36	3.13
Over 39 lbs. up to 40 lbs.	25c	44c	.84	1.63	2.42	3.21
Over 40 lbs. up to 41 lbs.	25c	45c	.86	1.67	2.48	3.29
Over 41 lbs. up to 42 lbs.	26c	46c	.88	1.71	2.54	3.37
Over 42 lbs. up to 43 lbs.	26c	47c	.90	1.75	2.60	3.45
Over 43 lbs. up to 44 lbs.	27c	48c	.92	1.79	2.66	3.53
Over 44 lbs. up to 45 lbs.	27c	49c	.94	1.83	2.72	3.61
Over 45 lbs. up to 46 lbs.	28c	50c	.96	1.87	2.78	3.69
Over 46 lbs. up to 47 lbs.	28c	51c	.98	1.91	2.84	3.77
Over 47 lbs. up to 48 lbs.	29c	52c	1.00	1.95	2.90	3.85
Over 48 lbs. up to 49 lbs.	29c	53c	1.02	1.99	2.96	3.93
Over 49 lbs. up to 50 lbs.	30c	54c	1.04	2.03	3.02	4.01
Over 50 lbs. up to 51 lbs.	30c	55c	1.06			
Over 51 lbs. up to 52 lbs.	31c	56c	1.08	Zone 7—First pound 10c,		
Over 52 lbs. up to 53 lbs.	31c	57c	1.10	additional pound 11c.		
Over 53 lbs. up to 54 lbs.	32c	58c	1.12	Zone 8—First pound 12c		
Over 54 lbs. up to 55 lbs.	32c	59c	1.14	additional pound 12c.		
Over 55 lbs. up to 56 lbs.	33c	60c	1.16	Local Zone and Zones 1, 2		
Over 56 lbs. up to 57 lbs.	33c	61c	1.18	and 3. packages up to 70 lbs.		
Over 57 lbs. up to 58 lbs.	34c	62c	1.20	are carried. The limit for all		
Over 58 lbs. up to 59 lbs.	34c	63c	1.22	other zones is 50 pounds. Ar-		
Over 59 lbs. up to 60 lbs.	35c	64c	1.24	ticles measuring more than 7		
Over 60 lbs. up to 61 lbs.	35c	65c	1.26	feet in length and girth com-		
Over 61 lbs. up to 62 lbs.	36c	66c	1.28	bined, explosives, inflammable		
Over 62 lbs. up to 63 lbs.	36c	67c	1.30	articles and poisons cannot be		
Over 63 lbs. up to 64 lbs.	37c	68c	1.32	shipped by parcel post.		
Over 64 lbs. up to 65 lbs.	37c	69c	1.34	All books up to and includ-		
Over 65 lbs. up to 66 lbs.	38c	70c	1.36	ing 8 ounces, 1 cent for 2 oza.		
Over 66 lbs. up to 67 lbs.	38c	71c	1.38	to any part of the U. S., re-		
Over 67 lbs. up to 68 lbs.	39c	72c	1.40	gardless of distance, over 8		
Over 68 lbs. up to 69 lbs.	39c	73c	1.42	ounces take the regular parcel		
Over 69 lbs. up to 70 lbs.	40c	74c	1.44	post rates accord ug to weight		
				and one.		

Charges in Effect April 15, 1925—All mail over 8 ounces, except first and second class is Fourth or Parcel Post. Old zone rates apply, but every package needs a 2 cent service stamp.

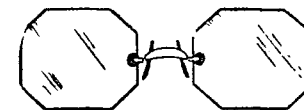
The Result of Service



Optical adjustments that brought health and happiness.

My Dear Mr. French

"I was bothered with indigestion and had no appetite—



"I was nervous and had sick headaches and could not read. I went to Ionia December 26, 1917, and had Mr. G. W. French test and fit my eyes with glasses which gave me instant relief. When sick in bed I would wear my glasses, which would quiet my nerves. I told my doctor that just the minute I put them on I felt better. Mr. French told me that it was my eyes which caused my sick headaches and indigestion and that he thought he could cure me. I am glad to say that I do not have any more nervous headaches and am not bothered with indigestion any more, but have a good appetite and have gained 15 pounds since wearing his glasses. They give me a clear and easy vision. He also fitted my son Paul with glasses which have strengthened his eyes and have made his school work easy.

"MRS. J. ROSECRANS,
Carson City, Mich."

This testimony was given after wearing the glasses six months. The demands for my services are such as to require my entire time being devoted to my optical department, so I have decided to give my patrons the benefit of my whole time.

Office Hours will be from 8 a. m. to 12 m, 1:30 to 6 p. m. Special appointments arranged.

G. W. FRENCH

Graduate
Optician
30 Years practice in
IONIA Phone 157-W

IONIA LAWYERS

- Eldred and Gemuend, Weber Block Phone 33
- Foss O. Eldred Residence Phone 561
- Harry H Gemuend Residence Phone 247
- Glenn D Mathews, Nat. Bk. Annex Bldg. Phone 68
Residence Phone 809
- George E. Nichols, Nat. Bk. Annex Bldg. Phone 68
Residence Phone 36
- Watt and Colwell, Morse & Babcock Block Phone 31
- J. Clyde Watt Residence Phone 470
- R. A. Colwell Residence Phone 674